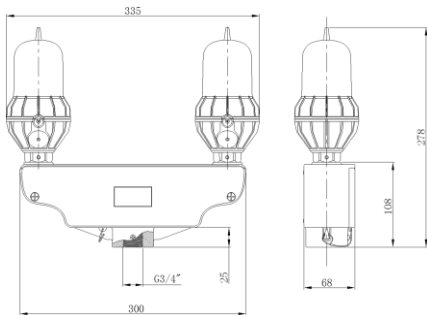


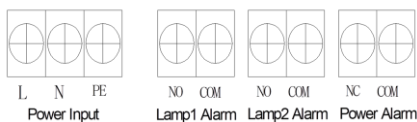


Installation dimension (mm)

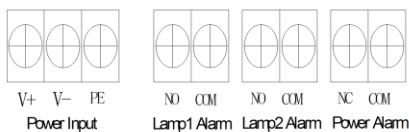


Wiring diagram

AC110-240V wiring



DC48V/DC12V wiring



Remarks : For customized product, please make object as standard.

Applications

Applying to tower(power transportation, telecom, GSM), smokestacks(power plant, coking plant, chemical plant), high buildings, bridge, harbor machinery, construction machinery, wind turbine etc for aircraft warning.

Main functions and features

- Use Fresnel lens, high utilization of light, valid keeping light beam in the scope as required.
- Based on LED technology, low power consumption, and high efficiency.
- Lamp housing is with bird spike. Its material is polycarbonate, good at anti-impact strength, thermal stability, fire resistance..
- Basing is aluminum alloy. It is light weight and corrosion resistance.
- G3/4" pipe is available for installation, easy for mounting.
- Self- contained compartment, with stainless steel wire which is used to secure the unit against falling in operation.
- Built-in micro monitoring controller unit. When and if service light fails , the controller switch on the standby light automatically.
- Photocell control function(optional).
- Failure warning output function(optional).
- Extremely reliable, maintenance cost saving.

Specification

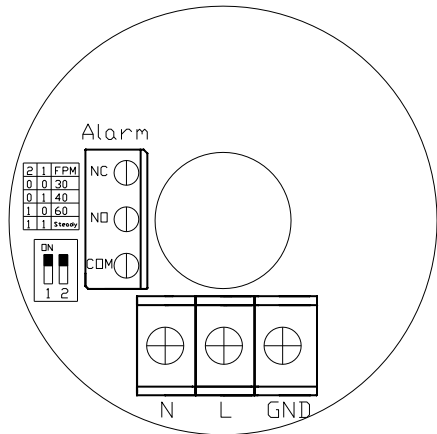
Standard	Compliant to the ICAO(Aerodromes Annex 14) and FAA-L810	Vertical degree	≥10°
Light source	High luminance LED	Horizontal degree	360°
Light color	red (other color can be customized)	Flashing rate	30FPM/40FPM/60FPM/ steady burning can be adjusted
Operating voltage	AC110-240V/DC48V/DC12V	Flashing duration	150±20ms
Power consumption	4W	LED lifetime	≥100,000h
Intensity	≥32.5cd	Photocell on/off level	500±50Lux
Operating temperature	-40°C ~ +70°C	IP protection	IP65
Relative humidity	10% ~ 95% (no condensing)	Weight	2.2kg
Material	Body : aluminum alloy Housing : PC		

Installation and operation

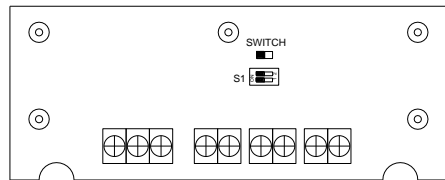
- Please check the supply voltage does comply with rated voltage of the lamp.
- Screw the lamp on G3/4' pipe of mounting bracket, which should be fixed on a smooth surface with enough mechanical strength. Or you can select our mounting bracket: PJ024, PJ005. Note that installation is fixed and reliable, so as not to fall.

Flashing rate adjustment:

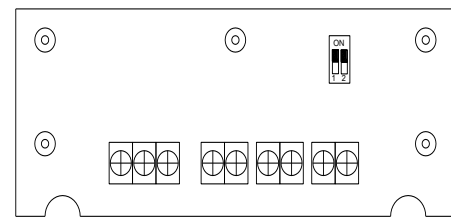
AC110-240V



DC48V/DC12V



Dual light/two light switchover



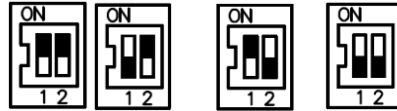
Application



- If the lamp is with photocell, please do not put photocell direct to nearby light. Meanwhile ensure that the photocell is not obstructed by nearby object.
- Open the connection box and connect the power wire, signal wire according to marking. Then remount the connection box.
- Switch on the power after check up. The light begins to work.

Adjustment of flashing rate

- Switch off the power.
- Unscrew the screws of housing and base.
- The flashing rate and adjusted code, please see as following:



1=ON,2=ON 1=OFF,2=ON 1=ON,2=OFF 1=OFF,2=OFF
30FPM 40FPM 60FPM Steady

- Screw the screws of housing and base.
- Power on, the light will work as your setting.

Dual light/Two lights switchover

AC110-240V :

- Switch off the power.
- The work model and adjusted code, please see as following:



1=OFF,2=OFF : Work model is in dual light way (Lead light + standby light. When and if lead light fails, standby light will switch on automatically.)



1=ON,2=OFF : Work model is in two lights way. (Two lights work at the same time)

- Power on, the light will work as your setting.

DC48V/DC12V:

- Switch off the power.
- Switch to SWITCH condition, and the corresponding woke mode as below:
SWITCH without jumper cap connect : the dual lights work with one host and the other one standby.
SWITCH with jumper cat connect: the dual lights work together.
- After cable connected well and close the junction box, power on, then lamp can be work normally.

Notice

- When the lamp works, temperature rising is normal phenomenon.
- Please do not open any components except professional serviceman.
- The product is a sealed structure. Do not be tampered by anyone other than registered installer.